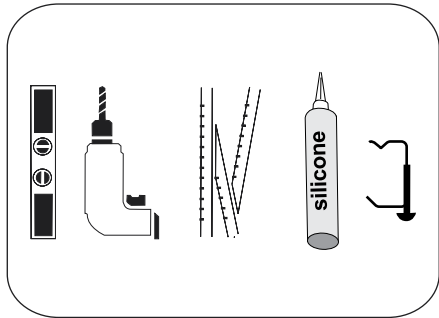
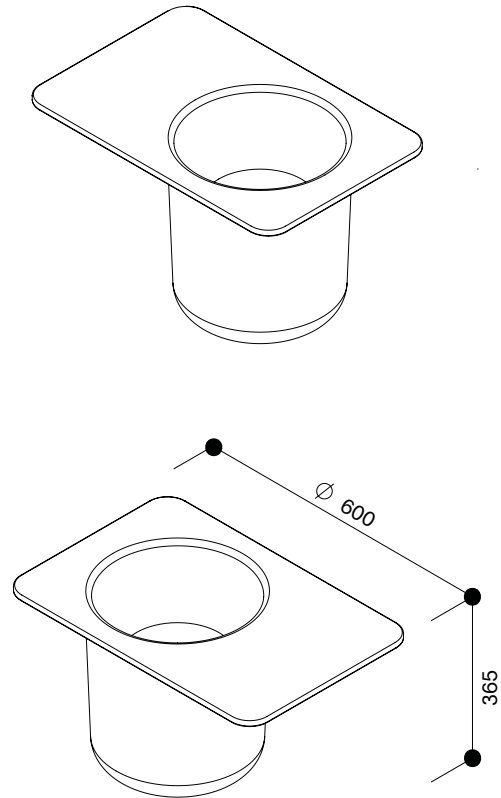


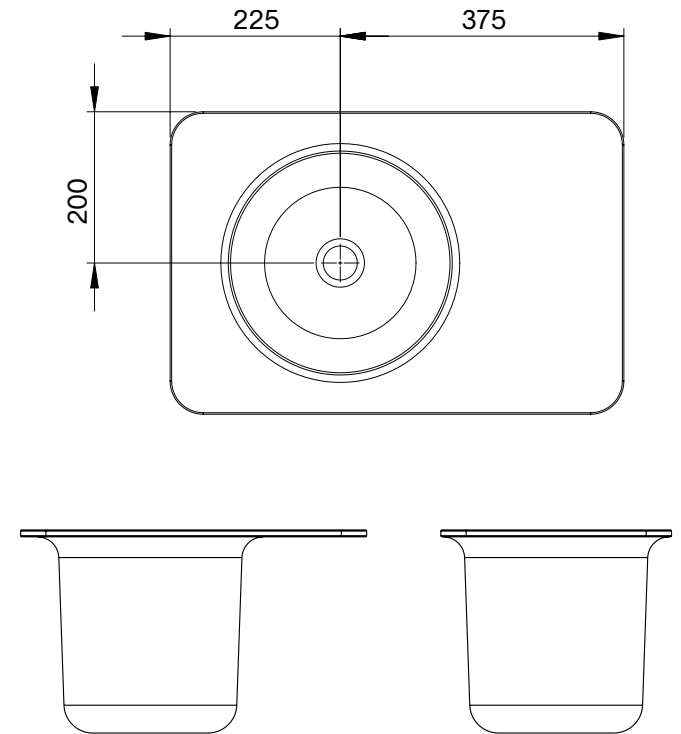
SAW & ANTI FUNGAL SILICONE
ADHESIVE BASIN CLIPS
MOUNTING CLIPS



01



02



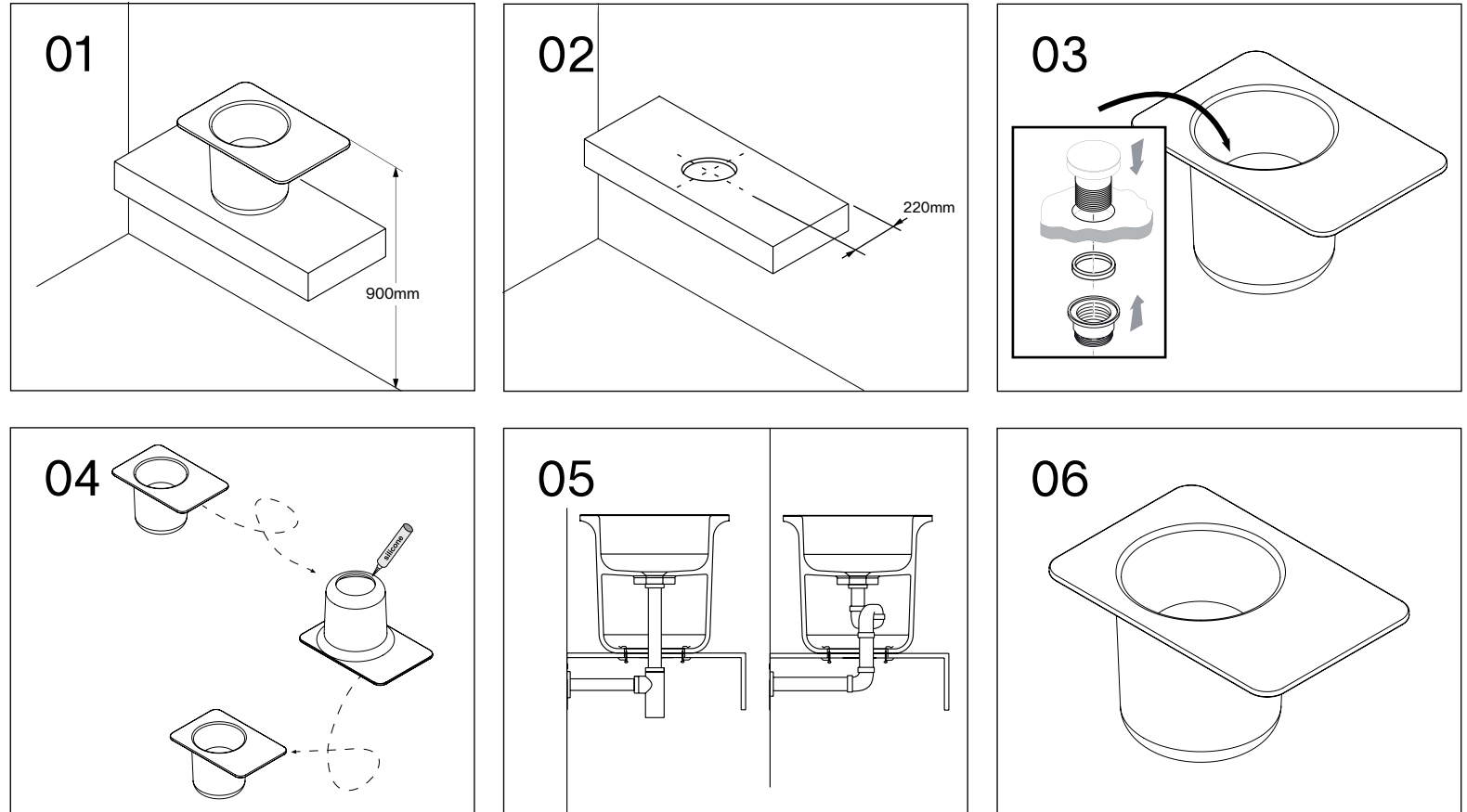
Installation Instructions - solid surface vessel basin installation

If you have any doubts please contact us: hello@united-products.co

Licensed Plumber / Builder Required For Installation.

Prior to installation please inspect product for any damage that can occur in transit and that product is correct.

01. Ledge can be placed on the left or the right.



Installation Instructions - if you have any doubts please contact us: hello@united-products.co

01. Position basin. Standard height 900mm from finished floor. Verify integrity of vanity surface and plumbing is in appropriate position for basin installation.

02. Use saw and cut $\varnothing 160\text{mm}$ waste/installation hole in level vanity surface. Hole center recommended minimum 220mm from finished wall.

03. Install waste specified for the basin.

04. Invert basin, confirm surfaces are clean and dry. Apply anti-fungal silicone adhesive to basin. Place basin in position aligning waste ensure basin is level.

05. Allow silicone to cure ensure basin is level. Affix basin mounting clips. Connect basin to waste, bottle or s trap can be used.

06. Clean with a soapy sponge, followed by a rinse. For stubborn stains such as lime scale or soap build up use a mild abrasive cleaner like gumption®paste, jif® cream or ajax® cream or powder - use with a soft damp cloth in wide circular motions. Enjoy