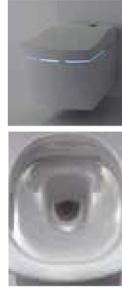


NEOREST LE II Wall Hung Toilet

CW996PVC / TCF996WAT



Neorest LE II carrying
innovative Actilight
Technology



Features

- Intergrated appearance of luxury, stylish, elegant
- Revolutionary technology, Actilight keeps the toilet clean on its own, and invisible waste
- Tornado Flushing For powerful flushing effect with less amount of water
- Integral WASHLET features front and rear warm water washing
- Automatic operation : Lid opens, closes and toilet flushes when sensor is activated
- Auto soft light function usable for night time usage

Actilight is a cutting-edge cleaning technology that includes a scientific glaze that's fired onto the bowl and a UV light inside the lid. Theres two features work together to generate the photocatalytic process that decomposes bacteria and waste. It keeps the toilet looking and feeling brand new.

Specifications

- Flush System : Tornado
 Water Use : 4.5L / 3L
 Rough-in : H=220 mm
 Water Pressure : 0.05MPa~0.75MPa
 Power Rating : 220~240V , 50/60Hz
 839~849W
 Length of Power Cord : 1.0m
 Size : 423W x 675D x 461H mm

Parts description

WASHLET included

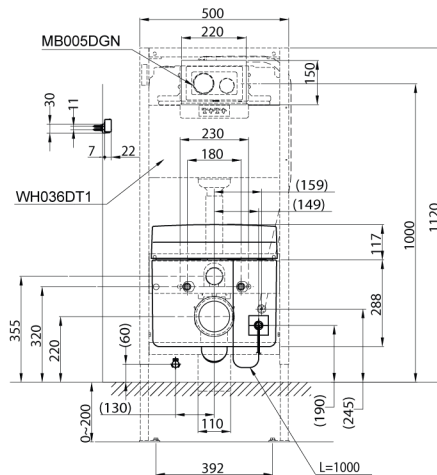
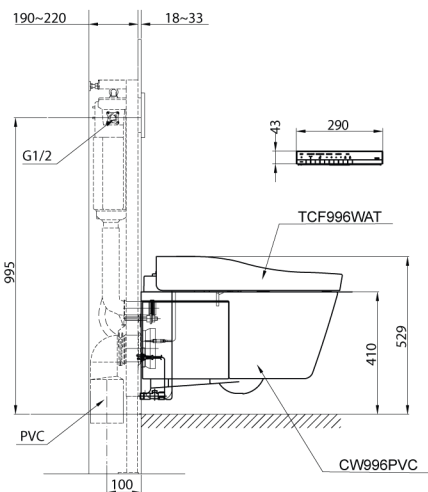
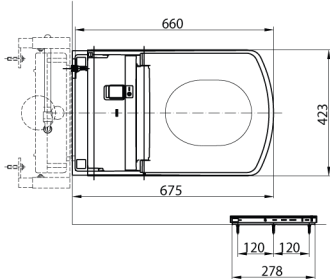
- **CW996PVC**
Water Closet Bowl (P-Trap)
(Rough-in 220)
- **TCF996WAT**
WASHLET Unit
- WH036DT1
Concealed Cistern w/Frame
- MB005DGN
Flush Panel

Colors

White (cefiontect)

Please consult a TOTO representative for details

CW996PVC / TCF996WAT



() Recommended Dimension